



# SE3 20 Heads

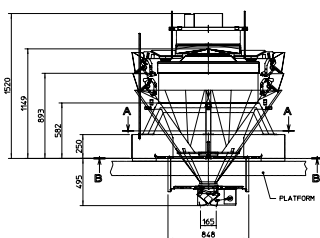
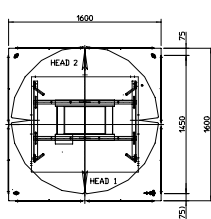
## CCW-SE3-220W-2D-20-PB

High performance, cost effective weigher to improve productivity.

Ideal for interfacing with twin or two single VFFS bagmakers to achieve speeds of up to 140wpm in free flowing product applications. The simple construction makes this machine easy to use and clean whilst Ishida's high quality and weighing accuracy ensures minimum product giveaway with a short payback period. A simple menu-driven interface with up to 100 pre-sets offer rapid changeovers.

- ▲ Sanitary and easy-to-use solution
- ▲ For dry, free flowing product applications
- ▲ Achieves combined speeds of up to 140wpm

### Dimensions



Performance		CCW-SE3-220W-2D-20-PB	
Max. weighing speed*		140 WPM (70 x 2)	
Max. vol. for weighing (per single dump)		3 litres	
Max piece length		95mm	
Weighing capacity setting (per head)		400g	800g
Minimum graduation		0.1g	0.2g
Specification			
Touch screen display (RCU)		10.4" Colour LCD Display	
Number of presets		100	
Weigh cell		Double-beam loadcell	
Materials		Product surfaces are made of stainless steel or other sanitary materials	
IP test rating		IP-54 Rating	
Power	Wattage	1.6kW	
	Voltage	200-240V 50/60Hz 1-phase	
Air**		N/A	
Net weight***		1,050kg	

Design and specifications are subject to change without notice (please confirm dimensions at point of order).

\* Depends on product shape, product density, target weight, feeding conditions, etc.

\*\* Compressed air supply is required only for WP machines. Note: Air hose compressor must be provided by user.

\*\*\* The machine weight varies depending on the options selected.

## SE3 20 Heads

Ishida has over 120 years history of weighing innovation, with more multihead weighers installed and adding value than any other supplier. The SE3 series offers high weighing accuracy at moderate speeds making it an ideal solution for growing companies.

### Features & Benefits

#### Increased yield and productivity

- ▲ Reduced giveaway and waste compared to conventional filling/weighing or semi-automated machines
- ▲ High processing capacity significantly improves production output
- ▲ Economical investment with a short payback period
- ▲ Contact part options to fit a wide range of solutions

#### Consistent and accurate weighing results

High weighing accuracy features include:

- ▲ High power stepper motors
- ▲ Ishida double-beam strain gauge loadcell on each weigh hopper
- ▲ Dispersion table load cell sends feedback signal upstream to adjust infeed
- ▲ Digital Filtering and Digital Signal Processing

#### Easy set-up and operation

- ▲ Intuitive, easy-to-use RCU (Remote Control Unit)
- ▲ Up to 100 product presets reduces changeover time
- ▲ Ethernet option (data capture software and services)
- ▲ Multiple language software settings

#### Minimised machine downtime

- ▲ Tool-free, interchangeable contact parts reduces cleaning time
- ▲ Simple operation RCU screens are easy to learn and prevent operator errors

#### Space saving

The small footprint makes this an ideal solution for smaller or restricted factory spaces.

#### Compliance with FDA and EU Food Contact standards

All materials are FDA-approved and comply with Article 16(1) of Regulation (EC) No 1935/2004 and Article 15 of Regulation 10/2011. To fully meet the EU's Restriction of Hazardous Substances Directive (RoHS) non-hazardous materials are used for all circuit boards, parts, materials, and finishes.

#### Compliance



**ISHIDA EUROPE LIMITED**  
Kettles Wood Drive  
Woodgate Business Park  
Birmingham  
B32 3DB  
United Kingdom  
Tel: +44 (0)121 607 7700  
Fax: +44 (0)121 607 7888  
info@ishidaeurope.com

**ISHIDA CZECH REPUBLIC**  
Tel: +420 317 844 059  
Fax: +420 317 844 052  
info@ishidaeurope.cz

**ISHIDA ROMANIA**  
Tel: +40 (0)21 589 73 52  
Fax: +40 (0)21 310 34 22  
info@ishidaeurope.ro

**ISHIDA FRANCE**  
Tel: +33 (0)1 48 63 83 83  
Fax: +33 (0)1 48 63 24 29  
info@ishidaeurope.fr

**ISHIDA RUSSIA AND CIS**  
Tel: +7 499 272 05 36  
Fax: +7 499 272 05 37  
info@ishidaeurope.ru

**ISHIDA GERMANY**  
Tel: +49 (0)791 945 160  
Fax: +49 (0)791 945 1699  
info@ishida.de

**ISHIDA SOUTH AFRICA**  
Tel: +27 (0)11 976 2010  
Fax: +27 (0)11 976 2012  
info@ishidaeurope.com

**ISHIDA MIDDLE EAST**  
Tel: +971 (0)4 299 1933  
Fax: +971 (0)4 299 1955  
ishida@ishida.ae

**ISHIDA SWITZERLAND**  
Tel: +41 (0)41 799 7999  
Fax: +41 (0)41 790 3927  
info@ishida.ch

**ISHIDA NETHERLANDS**  
Tel: +31 (0)499 39 3675  
Fax: +31 (0)499 39 1887  
info@ishida.nl