

# RVE Series

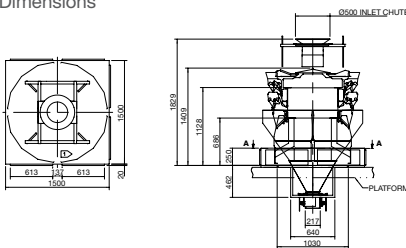
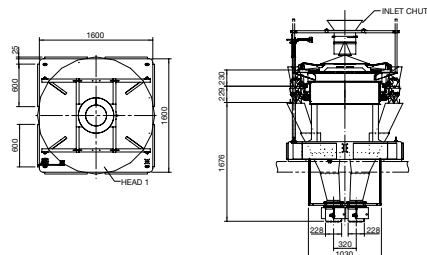
**CCW-RVE-216B-\*\*-30-SS/WP**
**CCW-RVE-220W-1S/2S-30-SS/WP**
**CCW-RVE-220W-1D/2D-30-SS/WP**


## High head weighers with up to 4 sections for accurate mixing or high speed multiple outlets

Designed as part of a range of specialist mixing and multiple outlet weighing, these higher head models provide sufficient combinations per section to maintain high speeds and high efficiency. Configured in a stainless steel finish or with an enhanced water proof design, the RVE series is built for long life operations in dry, fresh or frozen applications.

- ▲ For mix product or multiple outlet weighing
- ▲ Pre-configured for smart factories
- ▲ Achieves maximum speeds of up to 200wpm (double outlet)

### Dimensions


**CCW-RVE-216B-1D-30-WP**

**CCW-RVE-220W-1D-30-WP**

<b>Performance</b>		<b>CCW-RVE-216B-**-30-SS/WP</b>		<b>CCW-RVE-220W-1S-30-SS/WP</b>		<b>CCW-RVE-220W-2S-30-SS/WP</b>		<b>CCW-RVE-220W-1D/2D-30-SS/WP</b>	
Max. weighing speed*		200 WPM (double outlet)		85 WPM		70 WPM		140 WPM	
Max. vol. for weighing (per single dump)		4.5 litres							
Max piece length		130mm							
Weighing capacity setting (per head)		400g	800g	400g	800g	400g	800g	400g	800g
Minimum graduation		0.1g	0.2g	0.1g	0.2g	0.1g	0.2g	0.1g	0.2g
Machine target weight range		5-500g	45-1000g	5-500g	45-1000g	5-500g	45-1000g	5-500g	45-1000g
<b>Specification</b>									
Touch screen display (RCU)		10.4" Colour LCD Display							
Number of presets		200							
Weigh cell		Ishida double-beam strain gauge loadcell							
Materials		Surfaces are made of 304 stainless steel or other sanitary materials							
IP test rating		SS: IP54 Rating / WP: IP66 Rating (with optional factory fitted moisture sensors and alarm)							
Power	Wattage	0.8kW		0.9kW		0.9kW		0.9kW	
	Voltage	200-240V 50/60Hz 1-phase							
Air**		110 litres/min (ANR) 0.5 Mpa Air hose - PT 3/8" (for air dryer connection) Air purge 0.02-0.03 Mpa							
Net weight***		Approx. 750kg		Approx. 850kg		Approx. 850kg		Approx. 850kg	
Standard Compliance		CE/RoHS							

Design and specifications are subject to change without notice (please confirm dimensions at point of order).

\* Depends on product shape, product density, target weight, feeding conditions, etc.

\*\* Compressed air supply is required only for WP machines. Note: Air hose compressor must be provided by user.

\*\*\* The machine weight varies depending on the options selected.

## RVE Series

Ishida has over 120 years history of weighing innovation, with more multihead weighers installed and adding value than any other supplier. The upgraded RVE series represents the latest in multihead weighing performance for speed, accuracy and reliability, and comes with a wide range of features to ensure high performance industrial weighing is achieved at an interesting price point.

### Features & Benefits

#### Fast and precise weighing for improved productivity

High performance features include:

- ▲ Powerful frequency controlled vibration
- ▲ Programmable 5 stage digital filtering
- ▲ Advanced automatic feeder adjustments
- ▲ High processing speed 10.4" web RCU

#### Increased yield and productivity

- ▲ Reduced giveaway and waste compared to conventional filling/weighing or semi-automated machines
- ▲ High processing capacity significantly improves production output
- ▲ Economical investment with a short payback period
- ▲ Contact part options to fit a wide range of solutions

#### User-friendly design and easy set-up

Intuitive, easy-to-use RCU (Remote Control Unit)

- ▲ Simplifies initial set up and daily operations
- ▲ Minimises machinery downtime
- ▲ Maximises production efficiency
- ▲ Auto frequency tuning on vibration parts to ensure maximum power and control is always maintained
- ▲ Important for sticky or bulky products
- ▲ USB data import/export with ethernet connectivity

#### Minimised machine downtime

- ▲ Tool-free, interchangeable contact parts reduces cleaning time
- ▲ Simple operation RCU screens are easy to learn and prevent operator errors
- ▲ Optional factory fitted moisture sensors to alarm in the presence of any moisture in three zones within weigher

#### Pre-configured for SMART FACTORIES

- ▲ Increased productivity with Industry 4.0
- ▲ Sentinel™ Reporting Pack included free of charge for life
- ▲ Provides instant visibility of live machine performance from anywhere in the world
- ▲ Optional access to remote technical support, rapid response diagnosis and pro-active performance monitoring

#### Compliance with FDA and EU Food Contact standards

All materials are FDA-approved and comply with Article 16(1) of Regulation (EC) No 1935/2004 and Article 15 of Regulation 10/2011. To fully meet the EU's Restriction of Hazardous Substances Directive (RoHS) non-hazardous materials are used for all circuit boards, parts, materials, and finishes.

**ISHIDA EUROPE LIMITED**  
Kettles Wood Drive  
Woodgate Business Park  
Birmingham  
B32 3DB  
United Kingdom  
Tel: +44 (0)121 607 7700  
Fax: +44 (0)121 607 7888  
info@ishidaeurope.com

**ISHIDA CZECH REPUBLIC**  
Tel: +420 220 960 422  
info@ishidaeurope.cz

**ISHIDA FRANCE**  
Tel: +33 (0)1 48 63 83 83  
Fax: +33 (0)1 48 63 24 29  
info@ishidaeurope.fr

**ISHIDA GERMANY**  
Tel: +49 (0)791 945 160  
Fax: +49 (0)791 945 1699  
info@ishida.de

**ISHIDA MIDDLE EAST**  
Tel: +971 (0)4 299 1933  
Fax: +971 (0)4 299 1955  
ishida@ishida.ae

**ISHIDA NETHERLANDS**  
Tel: +31 (0)499 39 3675  
Fax: +31 (0)499 39 1887  
info@ishida.nl

**ISHIDA ROMANIA**  
Tel: +4 021 326 69 81  
Fax: +4 021 326 69 82  
info@ishidaeurope.ro

**ISHIDA RUSSIA AND CIS**  
Tel: +7 499 272 05 36  
Fax: +7 499 272 05 37  
info@ishidaeurope.ru

**ISHIDA SOUTH AFRICA**  
Tel: +27 (0)11 976 2010  
Fax: +27 (0)11 976 2012  
info@ishidaeurope.com

**ISHIDA SWEDEN**  
Tel: +46 (0)31 871 320  
info@ishidaeurope.se

**ISHIDA SWITZERLAND**  
Tel: +41 (0)41 799 7999  
Fax: +41 (0)41 790 3927  
info@ishida.ch