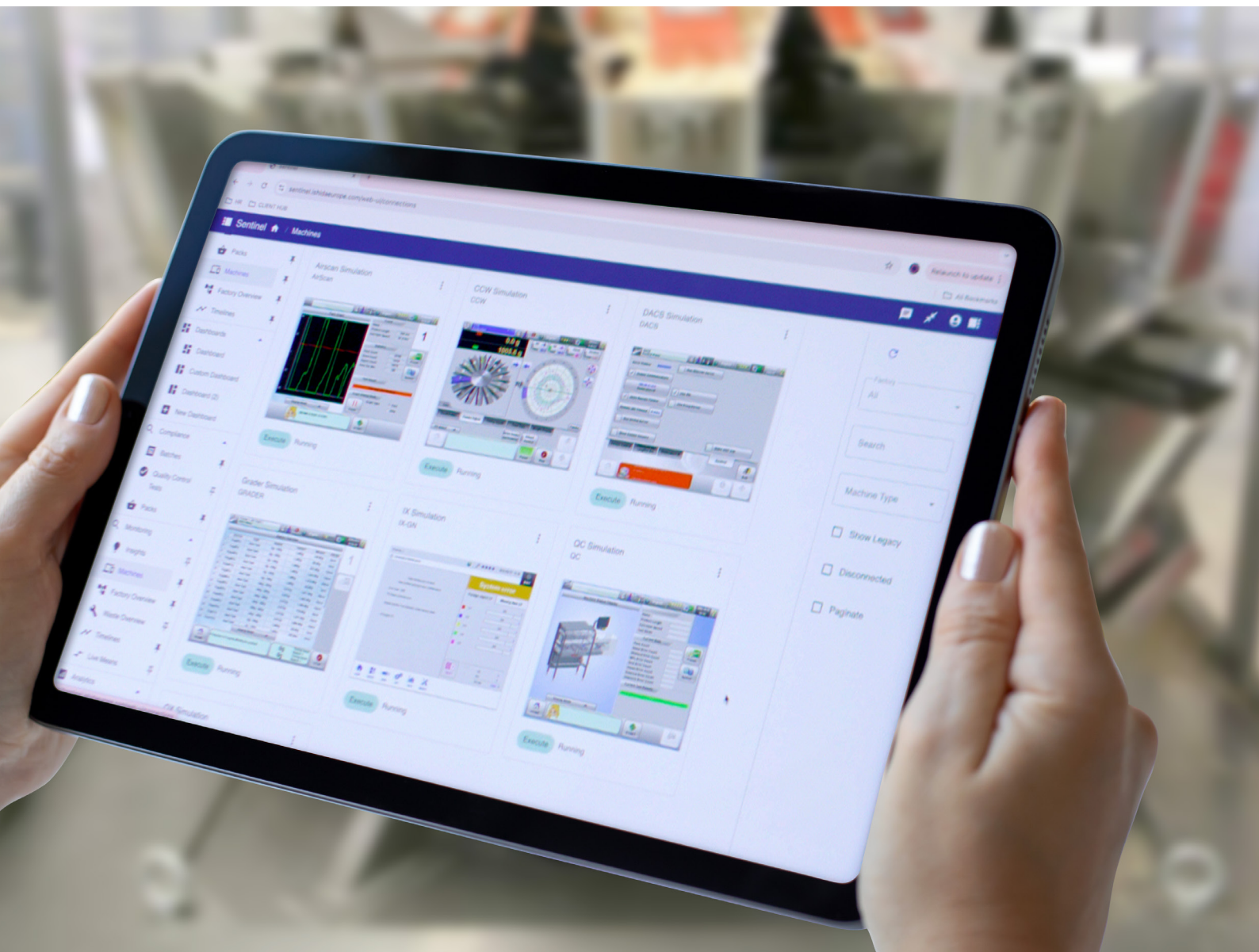


# Sentinel 5.0

Remote Production Monitoring



# Joined-up-thinking is smarter thinking

Sentinel 5.0 represents the next generation of advanced production monitoring systems.

Want to unlock greater efficiency? Reduce downtime? Get digital proof of compliance? Continually improve processes? And connect your whole packaging line through one integrated dashboard? Now you can with Sentinel 5.0 Production Monitoring from Ishida.

Seamlessly combining cutting-edge data analytics, artificial intelligence, and forward-thinking innovation, Sentinel 5.0 builds on the proven success of previous Sentinel systems to unleash the power of joined-up-thinking.

Specifically designed to empower food manufacturers, Sentinel 5.0 helps streamline operations, reduce costs, and maximise production efficiency like never before. Whether you choose Sentinel Local or Sentinel Cloud, you'll benefit from a tailored solution that fits your business needs perfectly.

## Your data. Your choice

Choose which solution works best for you.

### Sentinel 5.0 Local

Keeps your data securely stored on-site.

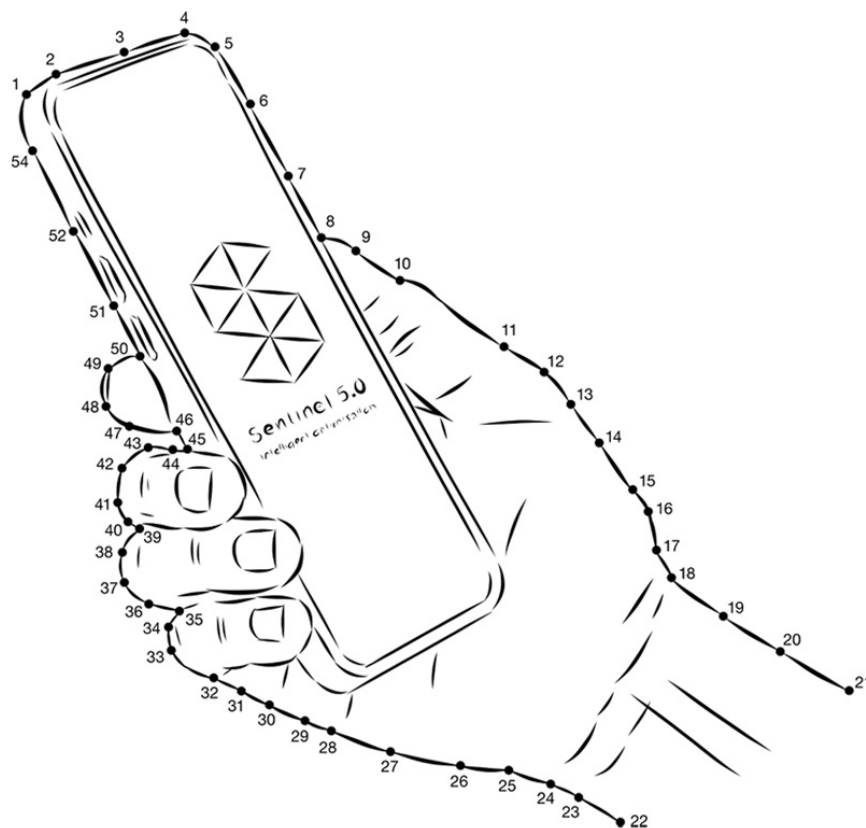
### Sentinel 5.0 Cloud

Utilises Ishida's cloud services for seamless data storage and access.

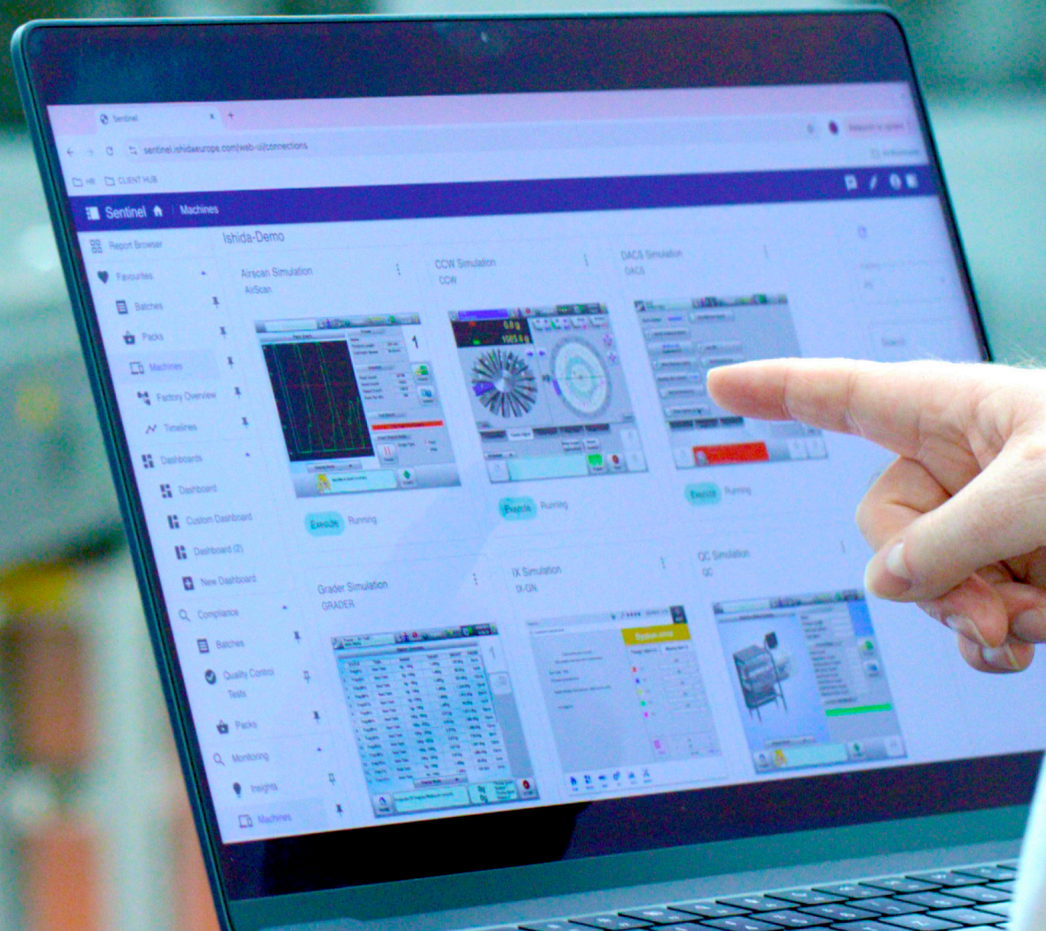
## Connect to more capabilities

Sentinel 5.0 replaces both IDCS and the existing Sentinel system, merging the best features of IDCS with Sentinel's advanced remote support functionality. It provides enhanced capabilities, including broad machine support and AI-driven insights for better performance analysis and predictive maintenance.

Choose Sentinel 5.0 for a smarter, more connected approach to production monitoring and set a new benchmark for operational excellence.



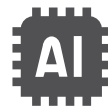




## Features and benefits



**Paperless e-marking proof of compliance and HACCP management**  
To reduce downtime and manual intervention.



**Industry 5.0 technology and adaptive AI**  
For clear data-driven decision making.



**24/7 monitoring and proactive maintenance**  
For faster servicing and reduced downtime.



**Third-Party Connector**  
For integrating other equipment seamlessly.



**Remote production monitoring**  
For increased throughput and greater efficiency.



**Customised dashboard**  
For simple, user-friendly operation.



**Whole line intelligence**  
For improved product safety and inter-machine optimisation.



**Modular design**  
Allows tailoring to a customers specific needs

# Intelligent optimisation, at every point

## Realise the benefits of Industry 5.0 with AI-enabled remote production monitoring

Ishida Sentinel 5.0 is an advanced machine monitoring tool providing detailed performance reporting and the optional benefit of specialist advanced support options when required.

### How it works

By establishing a secure 'outgoing' connection between your machine and the Sentinel 5.0 Cloud, real-time machine data analysis identifies the critical information needed to improve your performance.

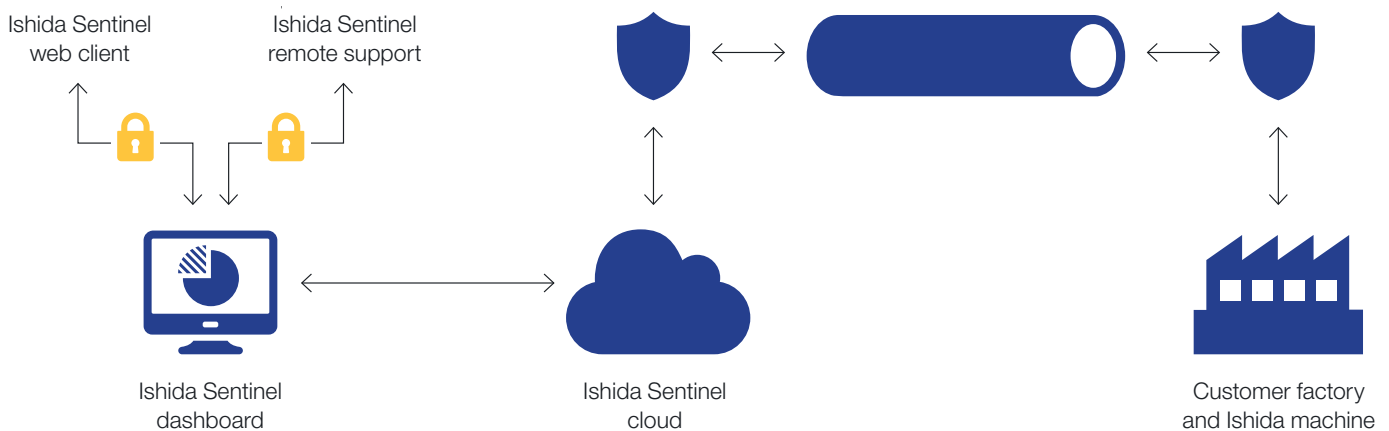
Through clear and effective web-based dashboards, Ishida Sentinel 5.0 provides users with essential operational insights. Our technical experts can even assist your users to gain a detailed overview of the machine status. Allowing them to advise, guide and potentially conduct repairs remotely - reducing unplanned downtime.

### Network pre-installation checklist

Before connecting Sentinel 5.0, certain prerequisites must be fulfilled to ensure compatibility. The following are the essential requirements:

- ▶ Ensure there are enough static IP addresses available for the machine
- ▶ Confirm that these connections have a route to the internet (typically this may require 1-2 IP addresses per machine)
- ▶ Allow traffic to Sentinel 5.0 by adding the following firewall rule: TCP 3080 outbound only to [sentinel.ishidaeurope.com](https://sentinel.ishidaeurope.com) (34.140.149.4)
- ▶ Please note that no inbound rule is required. All communications are outbound only, ensuring they remain within your control

## How it Works - Connection Process

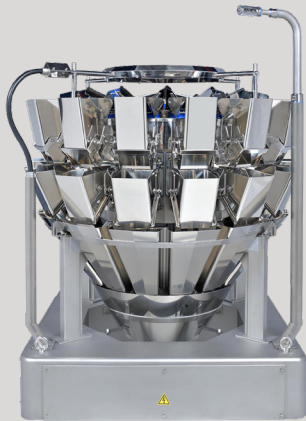




## Take your machines to the next level

Sentinel 5.0 is compatible with a wide range of machines, transforming the operational performance of your whole line.

CCW



DACS



Bagmaker



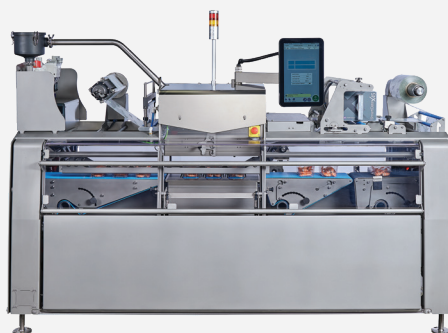
X-ray



ITPS



Traysealer



AirScan



# The power of AI at your fingertips

With Ishida knowledge built in, advanced AI data analysis provides unique insights into production performance.

Sentinel 5.0 simplifies vast quantities of data by automatically converting it into actionable information. This automated analysis provides real insights and useful advice based on years of Ishida expertise.

## 3 ways Machine Learning works

Three types of machine learning are utilised to generate these insights.

### Anomaly Detection

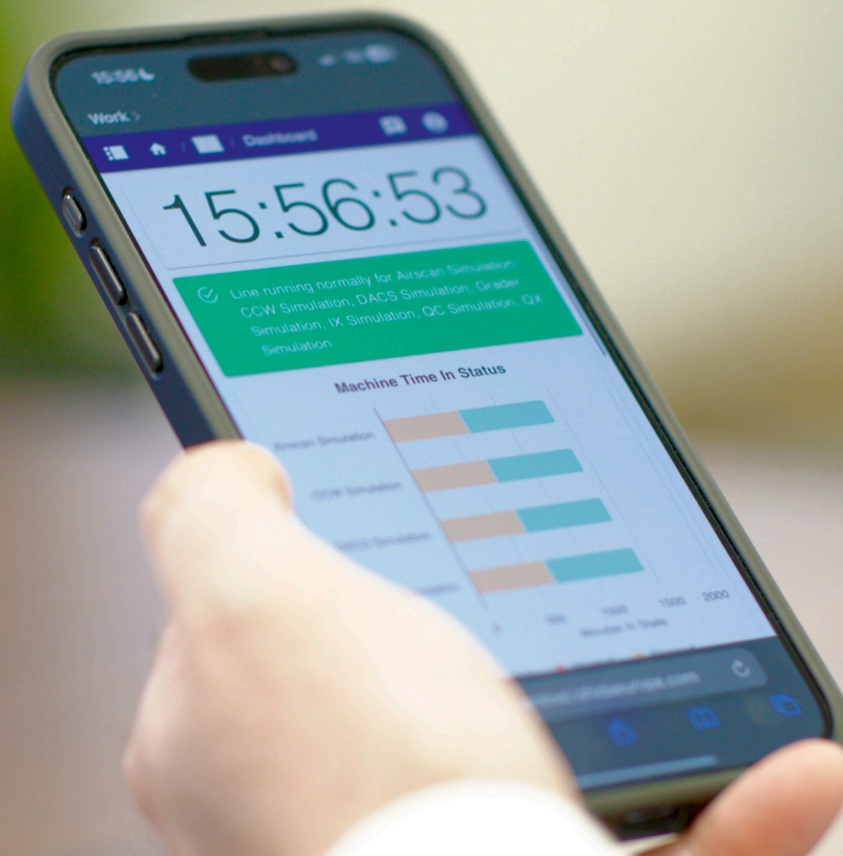
Machine learning analyses critical machine data points in the background, automatically detecting unusual occurrences, whether they are specific instances or long-term trends. This allows for issue detection without prior awareness.

### Performance Prediction

Customer KPIs are monitored and processed through a prediction algorithm to create estimated performance predictions. These predictions are evaluated over time to automatically detect under or over performing lines.

### Generative AI

Sentinel 5.0's Generative AI, built on decades of Ishida expertise, can be accessed via a chat feature for information anytime, anywhere. These features are deeply integrated throughout the application, enabling one-click native language report generation.



# Protecting you and your data

Ishida prioritises the privacy and security of its customers, ensuring the highest standards of protection.

## Ensuring the security of you and your data

We are committed to ensuring the security of your IT systems and the privacy of your data. We have integrated the latest security features into our systems and software to provide you with complete peace of mind in an increasingly challenging digital environment.

Sentinel 5.0's protection methods include:

- ▶ TLS encrypted connections to prevent data from being intercepted
- ▶ Outgoing only connection from the local LAN (no incoming connections)
- ▶ Proxy tunnelling support for an extra layer of local LAN protection
- ▶ Meets industry standard database security guidelines
- ▶ Login security meeting the latest industry standards
- ▶ Permission based access-control to limit user access
- ▶ Token based access-control for remote control connections
- ▶ Full audits of server and user events

Designed with the following regulations in mind:

- ▶ IEC 62443
- ▶ NIS2 directive
- ▶ Cyber Resilience Act



# Four tiers. More choice

Our flexible licensing packs give you the freedom to shape a modular solution around your precise needs.

## Tailor a Modular Solution to Your Exact Needs

Our adaptable licensing packages provide the flexibility to design a modular solution that aligns precisely with your specific requirements. To maximise cost efficiency, licenses can be acquired as a combination of bundled packs and individual options. Sentinel 5.0's Cloud licensing offerings include a series of license tiers that meets a range of operational needs.

Sentinel 5.0's Cloud licences include:

- ▶ Standard
- ▶ Freemium
- ▶ Premium
- ▶ Premium +

| Cloud License Tiers        | Standard<br>Good all-round functionality with basic data capture | Freemium (1 Year)<br>All the features and benefits of Premium with lower data usage (introductory 1 year offer) capture | Premium<br>Advanced functionality with AI, full compliance features and remote support | Premium+<br>The full package - with higher data use and remote monitoring | Pack Image<br>Three options available |
|----------------------------|--|---|--|---|---------------------------------------|
| Statistics Data Storage    | 1 Year   | 1 Year  | 3 Years  | Unlimited   | Reject Images Only<br>(Compressed)    |
| Pack Data Storage          | 1 Month  | 1 Month   | 1 Year   | 1 Year  |                                       |
| Reporting                  | Statistics Only  | Statistics and Alerts   | Statistics and Alerts  | Statistics and Alerts   |                                       |
| Pack Images                | Optional License   | Rejected Packs Only (compressed)  | Optional License   | Optional License  | All Images<br>(Compressed)            |
| Settings Change Monitoring | Logs Only  | Yes, with Alerts  | Yes, with Alerts   | Yes, with Alerts  |                                       |
| AI and Machine Learning    | No   | Yes   | Yes  | Yes   |                                       |
| Excel Export               | Standard Templates   | Fully Configurable  | Fully Configurable   | Fully Configurable  | All Images<br>(High Quality)          |
| API Access                 | No   | No  | Included   | Included  |                                       |
| QC (HACCP)                 | No   | Yes   | Yes  | Yes   |                                       |
| e-mark Compliance          | No   | Yes   | Yes  | Yes   |                                       |
| Machine Back-Up            | No   | No  | Yes  | Yes   |                                       |
| Remote Maintenance         | No   | Yes   | Yes  | Yes   |                                       |
| Ishida-Monitored           | No   | No  | No   | Yes   |                                       |
| Remote Support             | Chargeable   | Yes   | Yes  | Yes   |                                       |





## Service 365

Get the best out of your Ishida equipment and spread the cost with our preventative service plans - available at competitive monthly rates.

### Complete support is all part of the service

An Ishida Service 365 agreement is designed to enhance your experience and maintain the high-performance levels of your equipment. We offer 5 contract levels all tailored to suit the needs of your business depending on equipment type, usage and environment. Discover more.

# For every challenge, there's Ishida

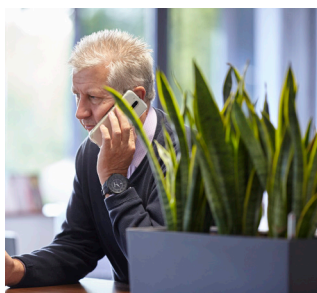
Want to cut food and packaging waste,  
and reduce costs? Find minute foreign  
objects and big performance gains?  
Discover smarter ways to significantly  
reduce product giveaway?

We've been turning questions into answers for 130 years,  
which means we have all the product solutions, sector expertise  
and proven know-how you need

## Trust Ishida

The most important question and the one we answer every day.  
Providing more compelling reasons for you to put your trust in us.

- ▶ Full range of weighing, x-ray inspection, checkweighing, tray sealing, packing and leak detection equipment, plus supporting software
- ▶ Fast and efficient installation, aligned to your specifications
- ▶ Built to the highest industry standards and powered by the latest technology, including advanced AI
- ▶ Specialists in both food and non-food applications
- ▶ Complete flexibility from a single machine to a fully integrated line solution
- ▶ Solutions fully tailored to your sector and your products
- ▶ Dedicated parts and servicing support, with 24 hour delivery in most cases
- ▶ Expert training online or at your site
- ▶ Dedicated engineers on call 24/7/365



Helpline

Spares

Service

Training

Ishida Europe,  
11 Kettles Wood Drive,  
Woodgate Business Park,  
Birmingham,  
B32 3DB  
+44 (0)121 607 7700  
ishidaeurope.com

Ishida Poland  
info@ishidaeurope.com

Ishida Czech Republic  
+420 220 960 422  
info@ishidaeurope.com

Ishida Netherlands  
+31 (0)499 39 3675  
info@ishidaeurope.com

Ishida East Africa  
+254 (0)20 8124333  
info@ishidaeurope.com

Ishida France  
+33 (0)1 48 63 83 83  
info@ishidaeurope.com

Ishida Romania  
+40 731 34 79 34  
info@ishidaeurope.com

Ishida Germany  
+49 (0)791 945 160  
info@ishidaeurope.com

Ishida South Africa  
+27 (0)11 976 2010  
info@ishidaeurope.com

Ishida Middle East  
+971 (0)4 299 1933  
info@ishidaeurope.com

Ishida Sweden  
+27 (0)11 976 2010  
info@ishidaeurope.com