

QX Tray Sealer Series

Fast. Efficient. Compact.



Performance. Sealed in.

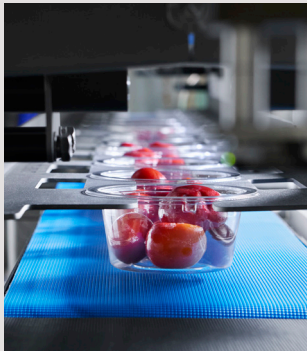
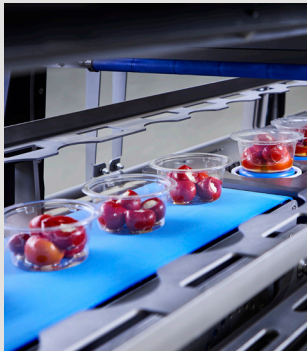
Looking for a compact tray sealer that's big on performance?
Look no further than the Ishida QX Series.

Developed in consultation with world-leading customers, our tray sealers deliver increased productivity with significant cost savings in energy usage and overall production costs. Providing all the benefits of advanced automation while making the smartest use of your floorspace, materials and budget.



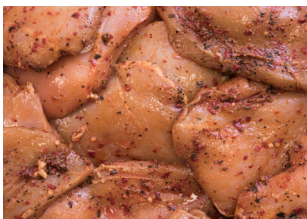
Smart. Compact. Efficient. Sustainable

The QX Series redefines tray sealing capabilities through innovative engineering features, revolutionary cassette tooling and space saving design.



Features and Benefits

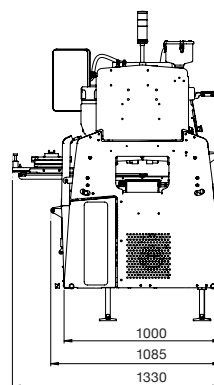
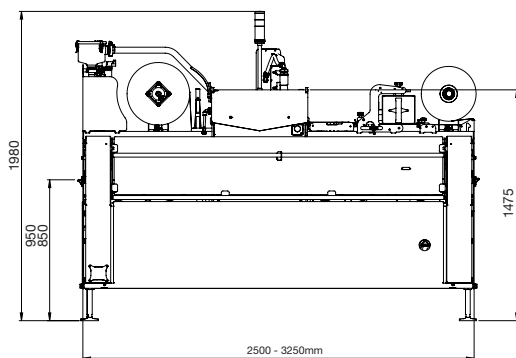
Customer Need	QX Value
Faster Production & Increased Capacity	Higher throughput. Cycle speeds 25 cycles seal only / 17 MAP
Marketing Leading Energy Consumption	Save's £1,000's p.a. on electrical consumption. Further savings achieved through no requirement for compressed air or water cooling*
Compact Machine Design	Production space at a premium, less space required. Low profile for improved visibility across production lines
Rapid Tool Changeover (Cassette Tooling)	< 5 min. change over time Production downtime reduced to a min. when changing between pack formats Rapid response to customer production needs.
Patented Tray Transfer System	Unbeatable smooth tray and product handling. To ensure seal accuracy and spillage free product transfer. Reducing product and packaging waste.
Sustainability	Supports sustainable packaging materials
Quality Assured	2-year Warranty
Smart Technology	Smart User Interface ensures minimal operator intervention. Connect to the latest AI-powered technology and intuitive diagnostics through Sentinel 5.0 Production Monitoring



* water cooling required for Skinpack only

Technical Specification

Specification	QX-500	QX-800
Maximum Tray Width	300mm	300mm
Tool Formats	Seal Only, MAP (Gas Flush, Vacuum Gas), Skinpack	Seal Only, MAP, (Gas Flush, Vacuum Gas), Skinpack
Type of Film Cut	Inside or Outside Cut	Inside or Outside Cut
Maximum Tray Height	Up to 120mm	Up to 120mm
Number of Impression Per Tool	From 1 to 4	From 1 to 7
Maximum Seal Only Cycle Speed	25 Cycles Per Minute	25 Cycles Per Minute
Maximum MAP Cycle Speed	17 Cycles Per Minute	17 Cycles Per Minute
Maximum Film Reel Diameter	350mm	350mm
Machine Weight (Without tool)	900 - 1200 Kg	1100 - 1400 Kg
Supply Voltage	32A 380-415VAC + N + E 3 Phase 50-60 Hz	32A 380-415VAC + N + E 3 Phase 50-60 Hz
Length	2500mm	3250mm



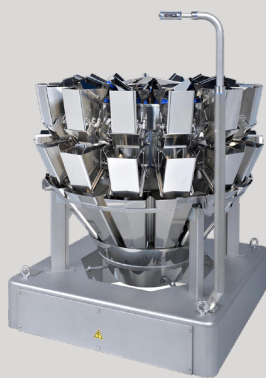
Seal in greater performance.
Get in touch today.
+44 (0)121 607 7700

The full solution across your whole line

We design, manufacture and install a wide range of packaging solutions to support your complete line.

Our proven products and services include multihead weighers, X-Ray inspection systems, packaging and leak detection equipment, bagmakers and pick-and-place case packaging systems. We can connect you to the power of data through our Sentinel 5.0 Production Monitoring software. Plus, we offer expert consultancy and project management.

CCW



X-ray



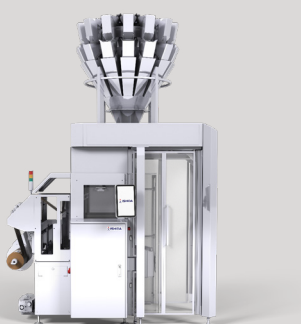
DACS



AirScan



ITPS



Bagmaker



Software that supercharges your data

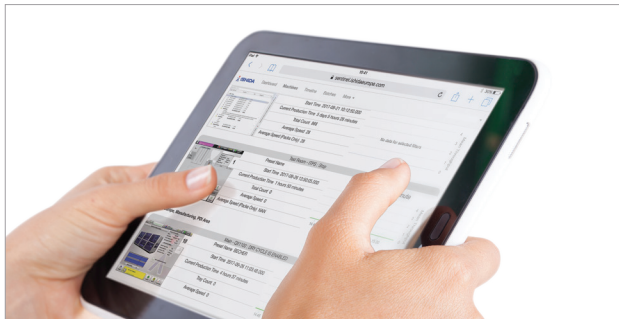
The quality control data you generate can go far beyond your immediate inspection objectives to materially improve the quality of your products and processes and increase profitability.

Ishida offers you software that unlocks the potential of thousands of recorded measurements that would otherwise remain as passive statistics.

Sentinel 5.0

Joined-up-thinking is smarter thinking

When it comes to optimising your quality control, joined-up-thinking is smarter thinking. With Sentinel 5.0 Production Monitoring, you can connect multiple systems through one integrated dashboard. Unlocking greater efficiency, reducing waste and downtime, and saving resources with digital proof of regulatory compliance.



More control at your fingertips

With Ishida knowledge built in, advanced AI data analysis provides unique insights. Anomaly detection learns normal behaviour and detects sudden deviations and long-term trends - continually improving quality control processes. Sentinel 5.0 enables real-time, remote monitoring and preventative maintenance, with direct assistance from Ishida experts when needed. Reducing costly downtime and maximising production performance.

Shaped around your needs

Sentinel 5.0 can be scaled to your requirements through a choice of platforms, while the dashboard is fully customisable for a more user-friendly experience. Thanks to its open architecture, it can easily integrate with your current systems, allowing you to maximise efficiency across all your assets – without additional investment.

Features and benefits



Paperless e-marking proof of compliance and HACCP management

To reduce downtime and manual intervention.



24/7 monitoring and proactive maintenance

For faster servicing and reduced downtime.



Remote production monitoring

For increased throughput and greater efficiency.



Whole line intelligence

For improved product safety and inter-machine optimisation.



Industry 5.0 technology and adaptive AI

For clear data-driven decision making.



Third-Party Connector

For integrating other equipment seamlessly.



Customised dashboard

For simple, user-friendly operation.



Fully scalable system

For bespoke tailoring to customer's exact needs.

For every challenge, there's Ishida

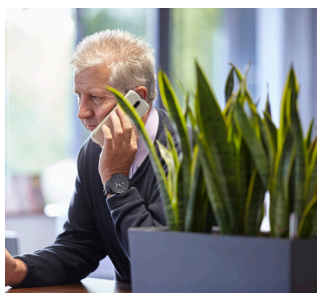
Want to cut food and packaging waste, and reduce costs? Find minute foreign objects and big performance gains? Discover smarter ways to significantly reduce product giveaway?

We've been turning questions into answers for 130 years, which means we have all the product solutions, sector expertise and proven know-how you need

Trust Ishida

The most important question and the one we answer every day. Providing more compelling reasons for you to put your trust in us.

- ▶ Full range of weighing, x-ray inspection, checkweighing, tray sealing, packing and leak detection equipment, plus supporting software
- ▶ Fast and efficient installation, aligned to your specifications
- ▶ Built to the highest industry standards and powered by the latest technology, including advanced AI
- ▶ Specialists in both food and non-food applications
- ▶ Complete flexibility from a single machine to a fully integrated line solution
- ▶ Solutions fully tailored to your sector and your products
- ▶ Dedicated parts and servicing support, with 24 hour delivery in most cases
- ▶ Expert training online or at your site
- ▶ Dedicated engineers on call 24/7/365



Helpline

Spares

Service

Training

Ishida Europe,
11 Kettles Wood Drive,
Woodgate Business Park,
Birmingham,
B32 3DB
+44 (0)121 607 7700
ishidaeurope.com

Ishida Poland
info@ishidaeurope.com

Ishida Czech Republic
+420 220 960 422
info@ishidaeurope.com

Ishida Netherlands
+31 (0)499 39 3675
info@ishidaeurope.com

Ishida East Africa
+254 (0)20 8124333
info@ishidaeurope.com

Ishida France
+33 (0)1 48 63 83 83
info@ishidaeurope.com

Ishida Romania
+40 731 34 79 34
info@ishidaeurope.com

Ishida Germany
+49 (0)791 945 160
info@ishidaeurope.com

Ishida South Africa
+27 (0)11 976 2010
info@ishidaeurope.com

Ishida Middle East
+971 (0)4 299 1933
info@ishidaeurope.com

Ishida Sweden
+27 (0)11 976 2010
info@ishidaeurope.com